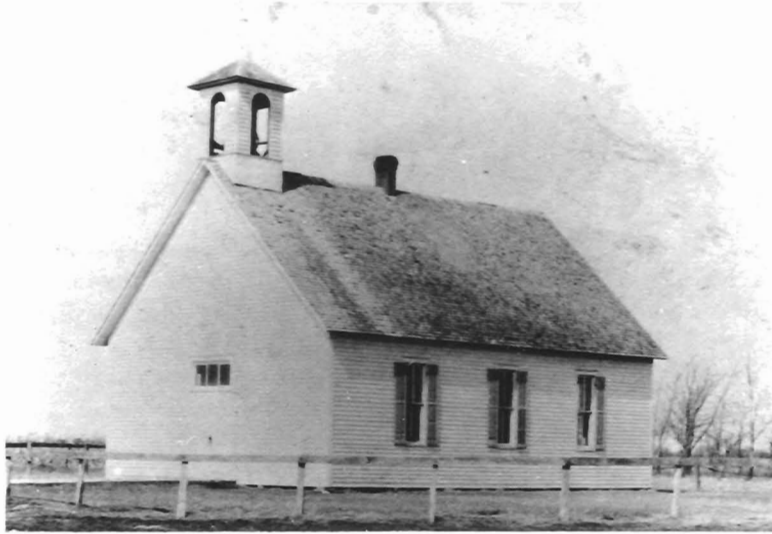


Kniffin Methodist Church

by
Harry Hibbs



Kniffin Methodist (Photo by Ray Murray)

Kniffin Church, four miles west of Seymour, Iowa, located in the S.E. corner of Sec. 18-68-20, Walnut township, was built in 1884.

These names of early pioneers who were associated with the village, were perhaps supporters and attendants of Kniffin Church. Salmon Sharp, Frank Sheaffer, Alex Hoscher, George Gunn, John and George Levisay, Sherman Miller, Harness Keller, also the families of McNutt, Cochran, Morgan and Daugherty.

Mrs. Ruth Wilson said "There was a charm about the old churches that spoke of true worship and a belief

in a Divine Being."

In January 1936, Milton Liggett of Seymour, bought the church and it became a part of his feed store. With the passing of Kniffin Church another old land mark becomes "Dust of the Hammer.", yet it withstood the ravages of storm and time for fifty-two years.

The church took its name from the village named "Kniffin" which was named in honor of David Kniffin, an early settler who came from the state of Ohio.

Maple Grove

by
Ortha Green

Maple Grove was a Methodist Episcopal Church located in the north west corner of Sec. 11-69-23 or Clay township, about five miles south-east of Humeston, Iowa. This was an early day church which was organized around 1800 or before. This church opened its doors to other denominations and in 1888 it helped to organize the Unity Baptist Church.

Mary Bell (Mrs. Frank Holder) united with the

church in 1901, and during a revival meeting held in 1908 Nellie Allred Coffey was among many conversions.

Rev. Meade held a protracted meeting which was attended by a large crowd, great interest was manifest with several conversions. in Feb. 1911.

After it ceased to be used as a church, it was maintained as a community hall for a few years, then sold somewhere around 1930.